

## Barkley Golf Center's Special

Enjoy a free hot dog and cup of coffee when you purchase a bucket of range balls at Barkley Golf Center. This offer is valid Monday through Friday, from 11am until 6pm through the end of October.



Just because summer is winding down, that doesn't mean your golf game has to get rusty. Barkley Golf Center's 24 covered stalls allow you to practice your swing year-round. In fact, fall and winter are great seasons to concentrate on perfecting your swing, either on your own or with the help of Barkley Golf Center's on-site golf professional. Then, you'll be ready to hit the links next season. And now, with this special offer, you can enjoy a hot cup of coffee and a hot dog, free of charge through October.

## PRESIDENT'S LETTER

Greetings again from all of us at Barkley Company. Fall has arrived with cooler weather and shorter days. I hope that your summer was a great one. It was certainly hot and dry!

Here at Barkley, our summer finished up with the beginning of another building project. The Dahlia Building is due to be completed next spring and will begin to establish the development of the property at the intersection of Woburn and Barkley. The architectural design of this building will be a little different from the existing projects here at Barkley. While maintaining some consistent features, such as the predominate use of brick and other masonry, we also wanted a bit of a departure, introducing some more contemporary design details. As the building begins to take shape, please let us know what you think.

On the bigger project front, we are currently collaborating with architects and urban planners on a significant design and planning effort for the property between Barkley Village and the office buildings to the north. Our focus over the next few years will be to work on the build-out of this area. We consider it to be the heart of the overall project and one that will continue to define the future of the Barkley District. In addition to more office and retail uses, we envision this area also including a significant number of residential units. We recognize that housing will be a very important component to the long term success of the District, and to the creation of a true Barkley community. Please look for more on this as we continue our efforts.

On a different subject, this year we have the Presidential election, along with Congressional races, many state races, and some local City Council elections as well. As I write this, campaigning is in full swing, and fairly typical of election year politics. Our primary system in Washington changed this year and now requires us to only vote for one party, rather than all parties. This looks like the way it will be going forward. I guess we have to get used to something new.

As we have seen with the current world conflicts, democracy is not an easy thing to introduce to a society. A lot of us probably take it for granted. I ask that you please do not do so. Our democracy is the result of many years of work by a lot of people. It also works pretty well. Please vote.

All the best for the rest of the year and the beginning of 2005.



Jeff Kochman, *President*

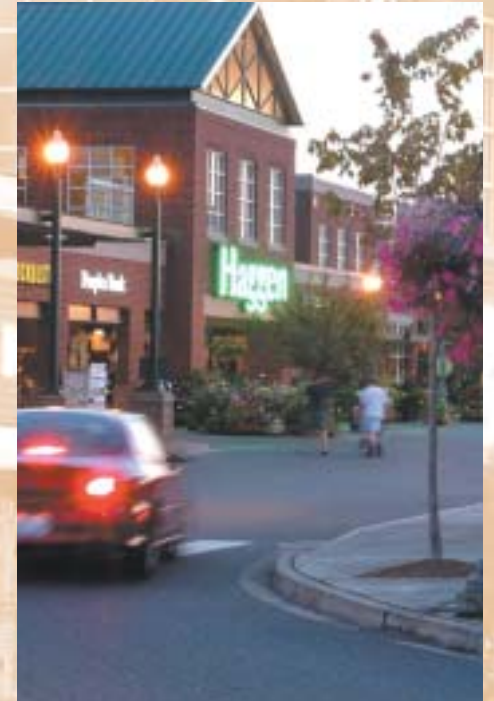
If you'd like to receive the Barkley Newsletter or more information about leasing and build-to-suit opportunities in Barkley Village, please call John Arrigoni at (360) 671-6450 ext. 103, or visit us at [www.barkleyvillage.com](http://www.barkleyvillage.com)



**BARKLEY**  
C O M P A N Y  
2200 Rimland Dr., Ste. 250  
Bellingham, WA 98226  
[www.barkleyvillage.com](http://www.barkleyvillage.com)



# BARKLEY NEWS



F A L L 2 0 0 4

## BARKLEY VILLAGE NEWS

### NEW TENANTS IN BARKLEY:

**Accelitec**, which moved its offices to Barkley in August of 2003, has already outgrown its space. Barkley Company was able to accommodate Accelitec's increasing space needs in another of its office buildings. The company has expanded its staff, and moved its offices to the first floor of the Olympic Building, at 2219 Rimland Drive. Accelitec develops proprietary technologies and products that automate and enable the use of radio frequency identification, and advance "contactless" payment programs.

**ScanSource**, a national technology-based company, opened its doors in the Arch Talbot Building at 2200 Rimland Drive. Pete Pleas, Sales Team Leader for the Western Region, stated that ScanSource is the leading international distributor of specialty technology products, including automatic identification, data capture and point-of-sale products. The Barkley office is one of the three sales offices located in the Western United States.

**On Rice**, a restaurant offering authentic Thai cuisine, will open for business this fall in the Arch Talbot Building at 2200 Rimland Drive, in the former Sheehan's restaurant space. On Rice, which currently operates a restaurant on Samish Way, will now have a second, north Bellingham location. On Rice has quickly gained a loyal following for its fast, delicious, and healthy



Thai cuisine. Open less than a year on Samish Way, On Rice was named "Best Thai Restaurant" in Bellingham by readers of the *Bellingham Weekly*.

**Performance Physical Therapy** has more than doubled its space in the Barkley Medical Center. After three years in its previous Barkley Medical Center location, PPT took advantage of the Center's expansion, and recently moved into beautiful, new architecturally-designed space on the second floor. PPT specializes in orthopedic and sports rehabilitation, and currently has 11 certified physical therapists.

## AROUND THE NEIGHBORHOOD

### Barkley Company Begins Dahlia Building Construction

Barkley Company broke ground in July on its newest building, located at 3110 Woburn Street, just north of the Barkley / Woburn intersection. The two-story, 17,000 square foot building, which will be home to a Washington Mutual retail bank branch and other businesses, will accommodate a mix of office and retail tenants. The multi-tenanted building was designed in a joint effort by Bryan Krannitz of Krannitz Gehl Architects of Seattle, and Brad Cornwell of Bellingham-based RMC Architects.



The new structure will continue with Barkley's tradition of using masonry and other timeless materials and finishes, but will present a more modern aesthetic, featuring metal shed roofs and other contemporary features. The building will provide functional office and retail space in a structure that enhances the neighborhood. Sited near one of Bellingham's busiest intersections, this signature building will extend



the urban fabric along Barkley Village's main arterial, providing its tenants with high visibility in a distinctive environment.

The building will be completed in the spring of 2005. For leasing information, please call John Arrigoni at (360) 671-6450 x103, or visit [www.barkleydistrict.com](http://www.barkleydistrict.com).

### Pacific Northwest Bank Now Wells Fargo

Following the acquisition of Pacific Northwest Bank by financial powerhouse Wells Fargo, the branch bank on the northwest corner of Barkley Boulevard and Woburn is now a Wells Fargo outlet. The change-over occurred during the summer.

## ACTIVITIES AND EVENTS

### Barkley Autumn Trail Run & Festival Returns October 16

The annual Barkley Autumn Festival and Trail Run, a fundraiser for the Whatcom Hospice Foundation, will return on October 16, 2004. The day will start with an 8K run and 3K walk that will loop along Barkley Boulevard and the railroad trail. The Alabama overpass allows participants to run the entire course without crossing any streets. Race registration and race



packet hand-out will take place in a tent near the Barkley Pumpkin Patch, beginning at 8:30 a.m., and the 10:00 am run and walk will start and finish in Barkley Village, under the clock-tower. The rest of the day will feature a host of activities



centered around Barkley Village and the Pumpkin Patch, including live music, food and refreshments, pumpkin sales, "train" rides, and more. Pumpkins will be on sale at the Patch beginning in early October.

Local garden enthusiast and committed volunteer, Sal Vacca, has once again coordinated the planting and growing of Barkley's Pumpkin Patch, as well as the dahlias that have been sold by donation throughout the summer. All net proceeds from the Barkley Autumn Festival, Pumpkin Patch and dahlia sales directly benefit Whatcom Hospice Foundation. This annual event raises tens of thousands of dollars each year for the Foundation, which provides financial support to Whatcom Hospice, whose mission is to provide comfort for the dying, and to preserve dignity at the end of life.



For further information, please go to [www.barkleyvillage.com](http://www.barkleyvillage.com) or [www.hospicehelp.org](http://www.hospicehelp.org), or call 671-6450.